

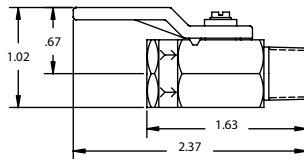
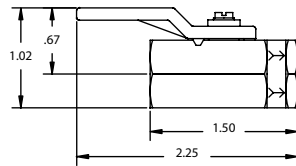
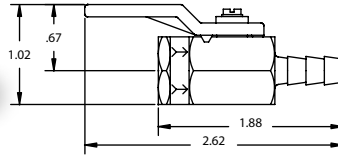


Vertically Integrated, Made in the USA

THE SPECIALTY MFG. CO.

5858 Centerville Road • St. Paul, MN 55127-6804
Tel: (651) 653-0599 • Fax: (651) 653-0989
www.specialtymfg.com • e-mail: info@specialtymfg.com

025 SERIES BALL VALVE



Design Considerations

The 025 Series One-Way Ball Valve compact design promotes multiple configurations to fit the exact end use application. The 025 Ball Valve Series is rated to 500 psi and will support flow and pressure only in the flow direction. The 025 Series has a one-piece body construction, stamped with directional flow arrows, to cover 1/4" NPT end configuration applications. The Zinc Die Cast Lever Handle is standard. Handles can be ordered Reversed - to lie over the outlet when the valve is in the open position. UL configurations are available and rated to 250 psi. UR configurations are available and rated to 500 psi.

- Maximum Operating Pressure — 500 psi
- Maximum Operating Temperature — 180°F
- Ball Through Hole Diameter — .218

Options

Material Options	Brass Body, Nickel Plated Brass Ball, Teflon® Seats, Stainless Handle Screw	
Seal Options	Buna-N, Ethylene Propylene, Fluoroelastomer (Viton®), Neoprene, Perfluoroelastomer	
Body Options	1/4 Female x 1/4 Female NPT 1/4 Female x 1/4 Male NPT 1/4 Female x 1/8 Female NPT 1/4 Female x 1/4 Hose Barb	1/4 Female x 11/16-16 Male 1/4 Female x 7/16-24 Female
Handle Options	Zinc Die Cast Lever (Standard), Zinc Die Cast Lever with Red Vinyl Sleeve, Steel Lever, Round Handle, Steel Lever with Red Vinyl Sleeve, Round Zinc Die Cast Handle, Black Nylon T-Handle, Blue Nylon Handle, .312 x 1" Stem, Screw Slot Headed Ball	
Plating Options	No Plating (Standard), Electroless Nickel	

Example of How To Order

Inlet End 1/4 FNPT	Outlet End 1/4 MNPT	Seal Buna-N	Handle Steel	Plating ENP
------------------------------	-------------------------------	-----------------------	------------------------	-----------------------

SMC Part Number: 025-4F4M-B,SH,ENP

The handle will lie over the Inlet port when the valve is in the open position. SMC Part Numbers are a description of the valve as read left to right, Inlet to Outlet.
Example: 025-4F4M-B,SH,ENP = 1/4 FNPT Inlet x 1/4 MNPT Outlet

SMC will quote alternate materials or customize our standard products when quantities ensure competitive pricing.